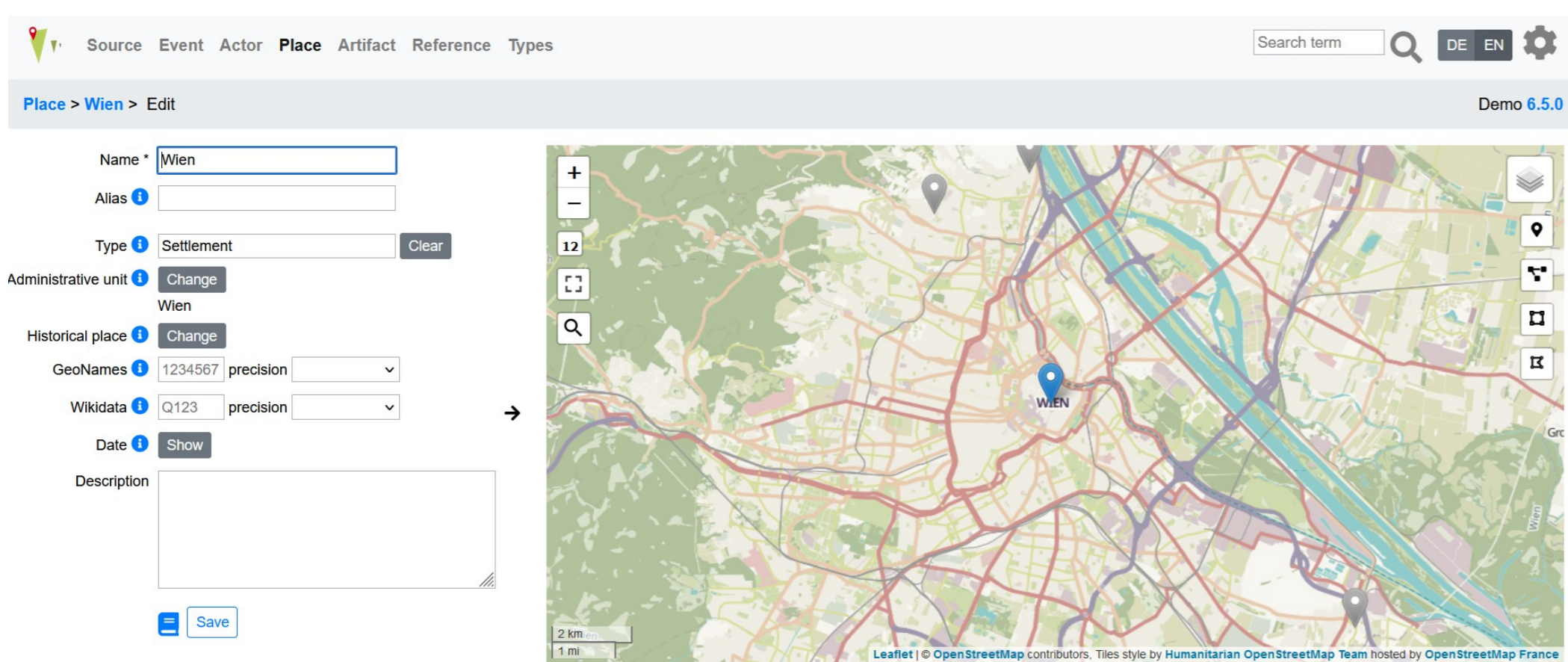


OpenAtlas

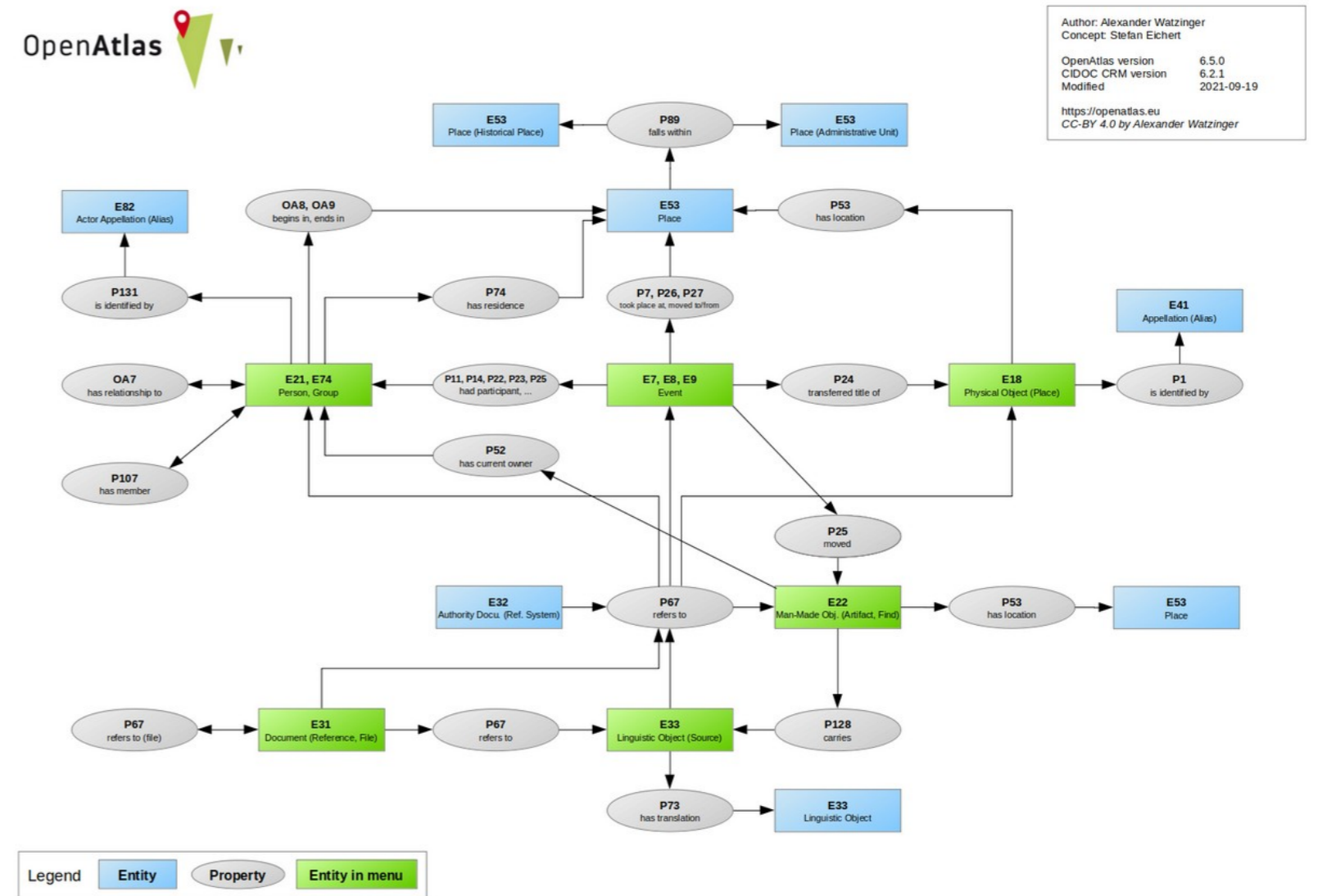


OpenAtlas is an open source database software developed especially to acquire, edit and manage research data from various fields of humanities like history, archaeology and prosopography as well as related scientific data.

It provides a **user interface** that can be accessed via any common web-browser and allows the respective researchers to work with their data via customized forms and categories to record complex relations as simple as possible.



The software automatically maps the information to the international standard of the **CIDOC CRM** and takes care of today's requirements regarding data standards, data management and aims for FAIR principles.



It solely uses **open source technology**. It is and always will be free of charge and open source to guarantee continued usage. The code is freely available on GitHub.



OpenAtlas is developed by a small **team** based at the ACDH-CH as well as numerous international contributors.

Furthermore, OpenAtlas provides an API, possibilities to create linked data, network visualizations, a demo versions and much more. To find out about all the possibilities visit <https://openatlas.eu/> or <https://github.com/craws/OpenAtlas>



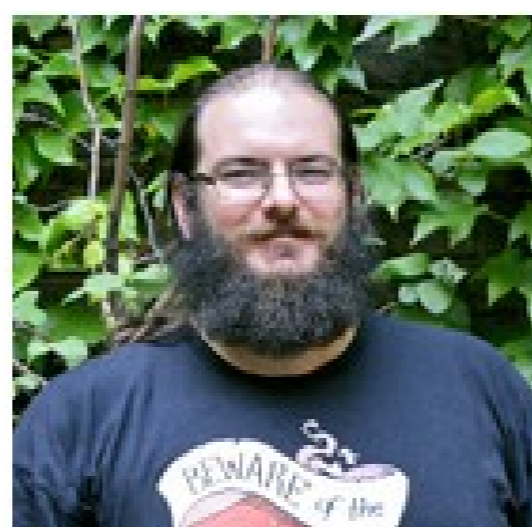
Stefan Eichert

Idea, Concept, Data Modeling



Alexander Watzinger

Lead Developer, Concept



Bernhard Koschiček-Krombholz

Software Developer, API



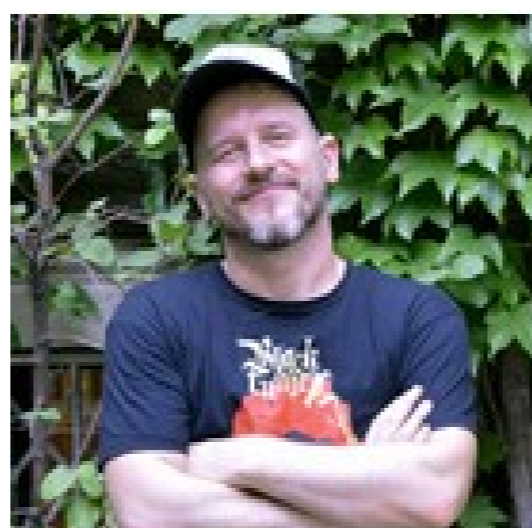
Christoph Hoffmann

Frontend Developer



Nina Brundke

Bioarchaeologist



Jan Belik

Design

Or contact us at openatlas@oeaw.ac.at

