



# OpenAtlas An Introduction

Alexander Watzinger

CC-BY 4.0



# About the Speaker

Alexander Watzinger (Alex)



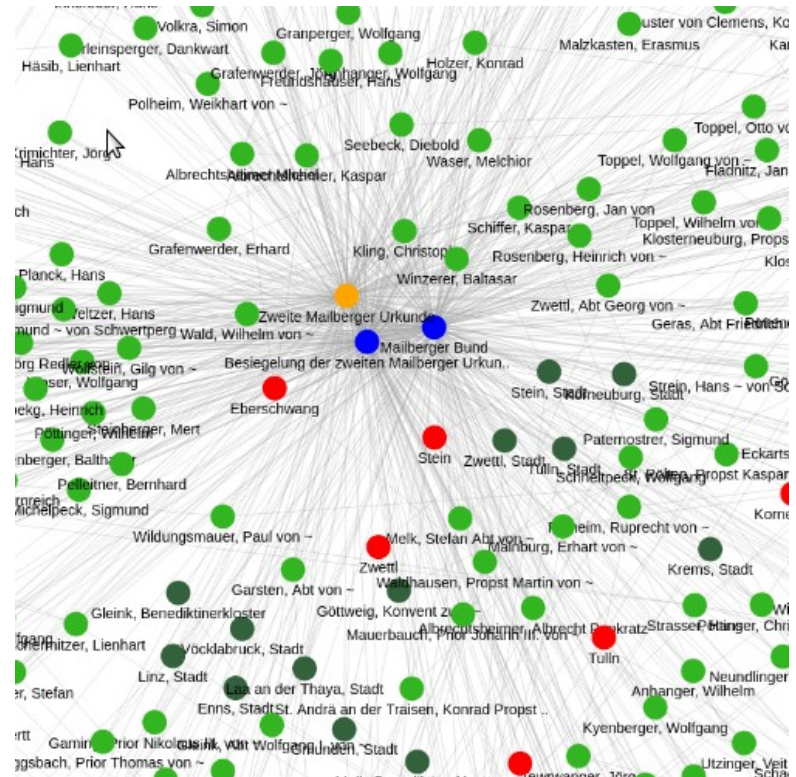
INDIGO workshop 2021

- Lead developer of OpenAtlas
- Works at the ACDH-CH, an institute of the Austrian Academy of Sciences
- Loves open source and scientific projects

# About OpenAtlas

<https://openatlas.eu>

- Open source, browser based database software
- Initiated about 10 years ago by Stefan Eichert
- Acquire, edit and manage research data
- CIDOC CRM as model
- Mainly developed at the ACDH-CH



<https://demo.openatlas.eu/overview/network/>

# OpenAtlas Cooperations

with projects from all fields of the humanities

- Mostly historical, archaeological and prosopographic projects
- A lot of synergies between the projects

The logo for MAMEMS, featuring a stylized 'M' composed of blue and teal geometric shapes followed by the word 'MEMS' in a blue sans-serif font.The logo for 'Approaching Byzantium', with the words 'APPROACH' and 'BYZANTIUM' stacked. To the right of the text is a vertical stack of five horizontal pink lines of varying lengths, resembling a staircase or a stylized 'I'.The logo for Indigo, featuring a stylized graphic of three overlapping squares (orange, blue, and pink) to the left of the word 'Indigo' in a purple sans-serif font.The logo for THANADOS, with the word 'THANADOS' in a bold, black, sans-serif font. The letter 'O' is replaced by a white skull icon.The logo for 'Moving Byzantium', featuring the text 'Moving Byzantium' in a black sans-serif font. A red arrow points from the text towards the right.The logo for cnnec, featuring a network diagram with a central purple node and several peripheral nodes in orange, red, green, and yellow, connected by thin lines. The word 'cnnec' is written in a lowercase, black, sans-serif font.The logo for MEDCON, with the word 'MEDCON' in a bold, black, sans-serif font. The 'E' is replaced by a stylized graphic of a building or a network structure with red, yellow, and blue elements.The logo for DPP, featuring a stylized graphic of a cluster of dots in blue, green, and yellow to the left of the letters 'DPP' in a bold, black, sans-serif font. To the right of 'DPP' is a vertical line, followed by the text 'Digitising Patterns of Power' in a smaller, black, sans-serif font.

# OpenAtlas Team



**Stefan Eichert**  
Idea, Concept and Data Modeling



**Alexander Watzinger**  
Lead Developer and Concept



**Bernhard  
Koschiček-Krombholz**  
Software Development, API



**Nina Richards**  
Bioarchaeological Expertise



**Andreas Olschnögger**  
Frontend Development



**Jan Belik**  
Logo Design and Design Consulting

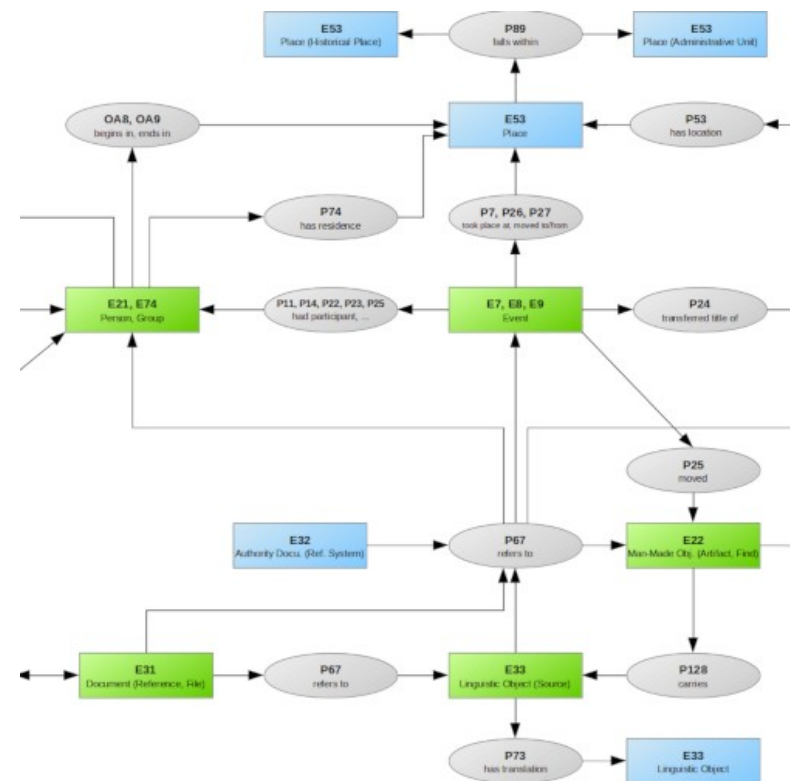
And many contributors, see <https://openatlas.eu/team>



# Model

## CIDOC Conceptual Reference Model

- International standard (ISO)
- Developed by CIDOC CRM Special Interest Group
- Specifies classes for entities like actor, source, event, place and rules how to link them
- Stored in an object oriented network



<https://demo.openatlas.eu/overview/model>

# Project Data

## Data enrichment with types and links

- Standard types
- Custom types
- Value types
- Linked open data
  - Wikidata
  - GeoNames
  - Custom, e.g. Vial, GND

The screenshot displays the 'Event' type selection interface in OpenAtlas. At the top, there are tabs for 'Standard types', 'Custom types', 'Place types', 'Value types', and 'System types'. Below these, a list of types is shown, with 'Event' highlighted in blue. The main area contains a search bar with the text 'Type to search' and a '+ Type' button. Below the search bar, a list of event types is displayed, each with a right-pointing triangle icon and a count in parentheses: 'Building activity 0', 'Change of Property 2 (69)', 'Confirmation of Property 12', 'Conflict 5', 'Consecration of a church 0', 'Extreme event 0', 'Gathering 0', 'Mentioned 23 (5)', 'Movement of people or goods 1 (8)', 'Recognition of Title 0', and 'Wedding 0'. On the right side, there is a 'Selection: single' section with 'Classes: Acquisition, Activity, Event, Move, Production' and 'Untyped entities: show'. Below this is a 'Description' section with the text 'Categories for the type of events like Change of property, Conflict, Movement, Attendance etc.'

<https://demo-dev.openatlas.eu/type>

# Live Demonstration

at <https://demo.openatlas.eu>

- Acquiring data
- Customizable types
- Adding geo locations
- External references
- Dealing with uncertainty in space and time
- and a lot more ...

The screenshot displays the 'Place' entity form in the OpenAtlas demo. At the top, a navigation bar includes a location pin icon and tabs for 'Source', 'Event', 'Actor', 'Place' (selected), 'Artifact', 'Reference', and 'Types'. Below this, a breadcrumb shows 'Place > + Place'. The form fields include: 'Name \*' (text input), 'Alias' (text input with a '+' button), 'Type' (dropdown menu with 'Change' button), 'Administrative unit' (dropdown menu with 'Change' button), 'Historical place' (dropdown menu with 'Change' button), 'GeoNames' (text input '1234567' with a 'precision' dropdown), 'Wikidata' (text input 'Q123' with a 'precision' dropdown), 'Date' (dropdown menu with 'Hide' button), 'Begin' (date/time picker with 'YYYY MM DD' and 'comment' fields), 'End' (date/time picker with 'YYYY MM DD' and 'comment' fields), and 'Description' (large text area). At the bottom, there are three buttons: 'Insert', 'Insert and continue', and 'Insert and add feature'.



# Thank you for listening



<https://openatlas.eu>