

OpenAtlas



A Database System for the Humanities and Beyond

Alexander Watzinger (Alex)



- Lead developer of OpenAtlas
- Works at the ACDH-CH / ÖAW
- Loves open source and scientific projects

OpenAtlas

- Project site: <https://openatlas.eu>
- Open Source, browser based database software
- Acquire, edit and manage research data
- Based on the model of [CIDOC CRM](#)
- Initiated over 10 ago by Stefan Eichert
- Mainly developed at the [ACDH-CH](#) / [ÖAW](#)



OpenAtlas Cooperations

- **Projects** from all fields of the humanities
- Mostly historical and archaeological projects
- A lot of synergy between the cooperations

MAMEMS

APPROACH
BYZANT
NG
UM

MEDCON

DPP
Digitising
Patterns of
Power

Indigo

FemCare
Vienna

THANADOS

connec

bITEM

Structured data

Aim

- Search
- Compare
- Merge
- Research questions

Workflow

- Identify classes for entities
- Add attributes
- Link entities -> network

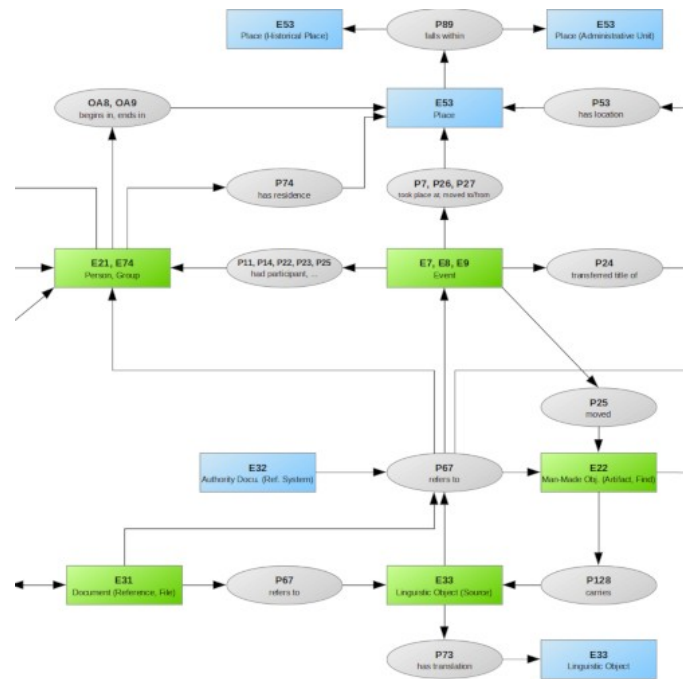
Challenge

- Balance between easy data entry and acquiring detailed information



Model - CIDOC Conceptual Reference Model

- International standard (ISO)
- Developed by the CIDOC CRM Special Interest Group
- Specifies classes for entities like actor, source, event, place and rules how to link them



Features

- Detailed description of [Features](#) in the manual
- Spatial, object, actor and event information
 - Detailed descriptions of objects
 - Person networks
 - Members of groups and their functions
 - Personal relations, kinship and more
 - Events
 - Hierarchical structure
 - Sequences of events
- Geographical and temporal information about every entity



Features

– Very adaptable types and reference systems

Dimensions

Type to search

+ Type

Edit

Delete

Azimuth 0

Degrees 2,700

✦ Diameter 2,735 (983)

Bottom diameter 317

Max Diameter 321

Min Diameter 85

Top Diameter 260

▷ Distance 0

Elevation 801

✦ Height 6,336 (150)

Height max 75

Height min 75

✦ Length 8,756 (356)

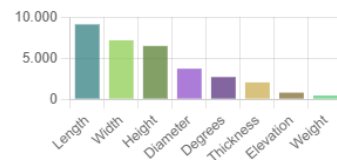
Classes: Artifact, Feature, Place, Stratigraphic unit

Multiple linked entities: [show](#)

Untyped entities: [show](#)

Description

Physical dimensions like weight and height.



+ Reference system

Show 10 entries

Search:

Name	Count	Website URL	Resolver URL	Example ID	Default precision	Description
AMA number	2424				exact match	Fortlaufende ...
Archaeologi...			https://digiar...	C-TX-20220...	exact match	
ArchWort	4	https://archw...	https://archw...	2873	exact match	
English Tra...	83			english name	exact match	EN
GeoNames	798	https://www...	https://www...	1234567	close match	Geographical...
German Tra...	85			Name auf De...	exact match	DE
Getty AAT	327	http://vocab...	http://vocab...	300400650	exact match	The Getty Re...
GND	4	https://gnd.n...	https://d-nb.i...	119338467	exact match	
NHMW Prae...	425			1234	exact match	Inventory Nu...
PeriodO	38	https://perio...	http://n2t.net/...	p0qnb66drd9	exact match	

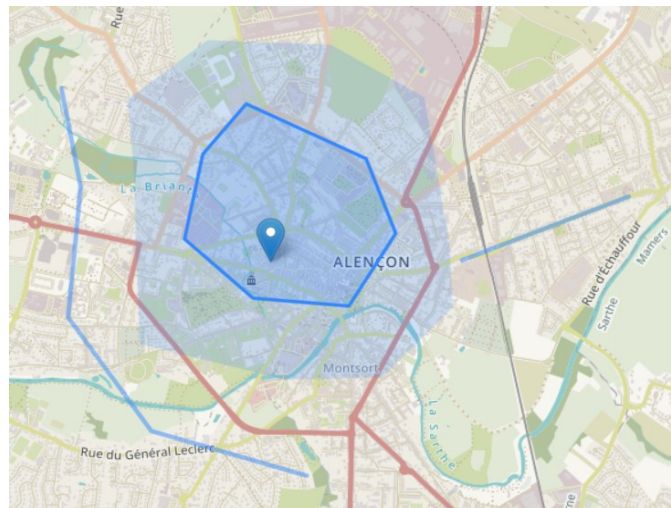
Showing 1 to 10 of 12 entries

Previous 1 2 Next

Features

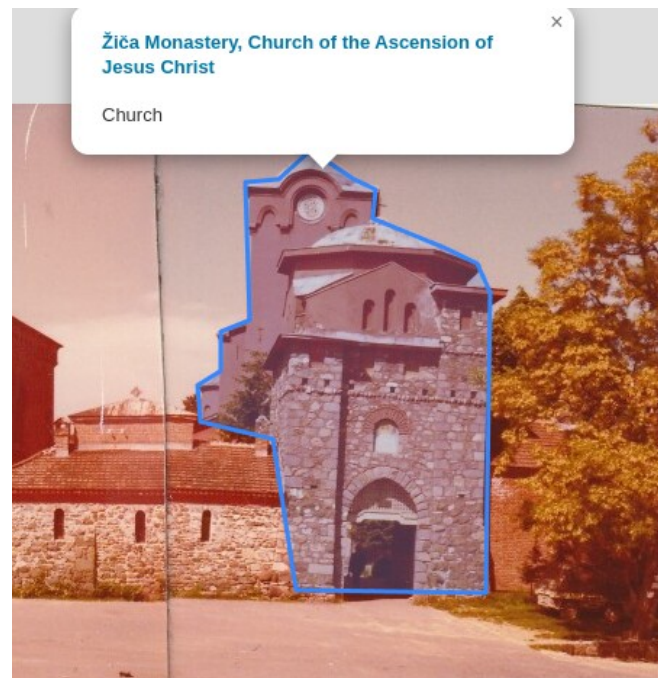
- Solutions for uncertainty in space and time

Begin	1011	01	01	comment
	1020	12	31	
End	1425	08	01	destruction
	1425	10	31	



Features

- IIF technology
- Image annotation
- Text annotation



Features

- Documentation
 - Project website: openatlas.eu
 - Code on [GitHub](https://github.com)
 - Detailed (up-to-date) [User Manual](#)
 - Technical [Wiki](#), [installation notes](#)
 - [Issue tracker](#), [roadmap](#) for planning
 - Public meeting [protocols](#)



USER INTERFACE

Features

Overview

Entity

Tools

Admin

DOCUMENTATION

Model

API

Database Structure

Application Structure

HELP

Examples

Troubleshooting

FAQ

Live Demonstration

<https://demo-dev.openatlas.eu/>

User: Demolina, Password: Demolina



Thank you!

OpenAtlas



Logos originate from the respective project pages.

Source and, if available, licence of external images are indicated.

The remaining content is licenced under [Creative Commons Attribution 4.0 International](https://creativecommons.org/licenses/by/4.0/).

